

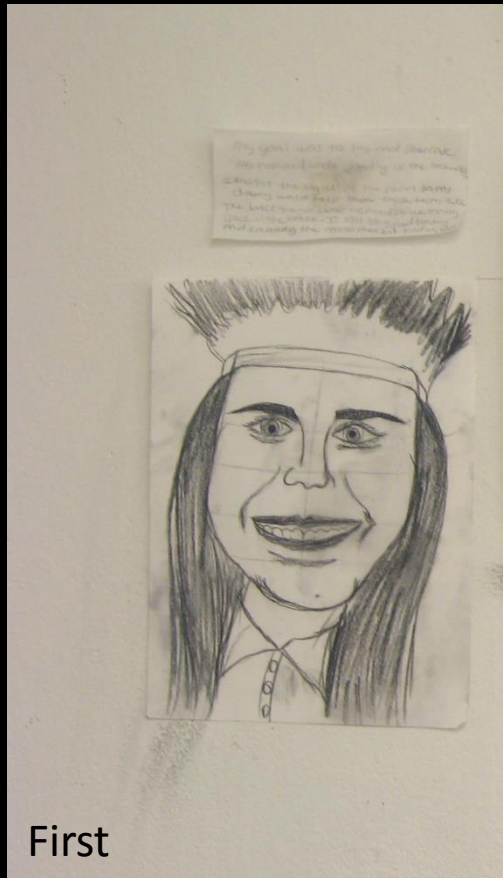
Student Work Portfolio

Beginning Drawing – Florida International University

Joanna Carter



This portfolio contains my previous students work examples of their first and last assignment of a semester. The first drawing is homework that was assigned and due before any full lesson has been given during the first week. The last assignment is given after a full semester of my class. This allows you to see the transformation that occurs for a student.



First



Last

Example Student #8:

First: Assignment – Self Portrait without instruction

Last Assignment – Portrait with Skull and Cube Skull



First



Last

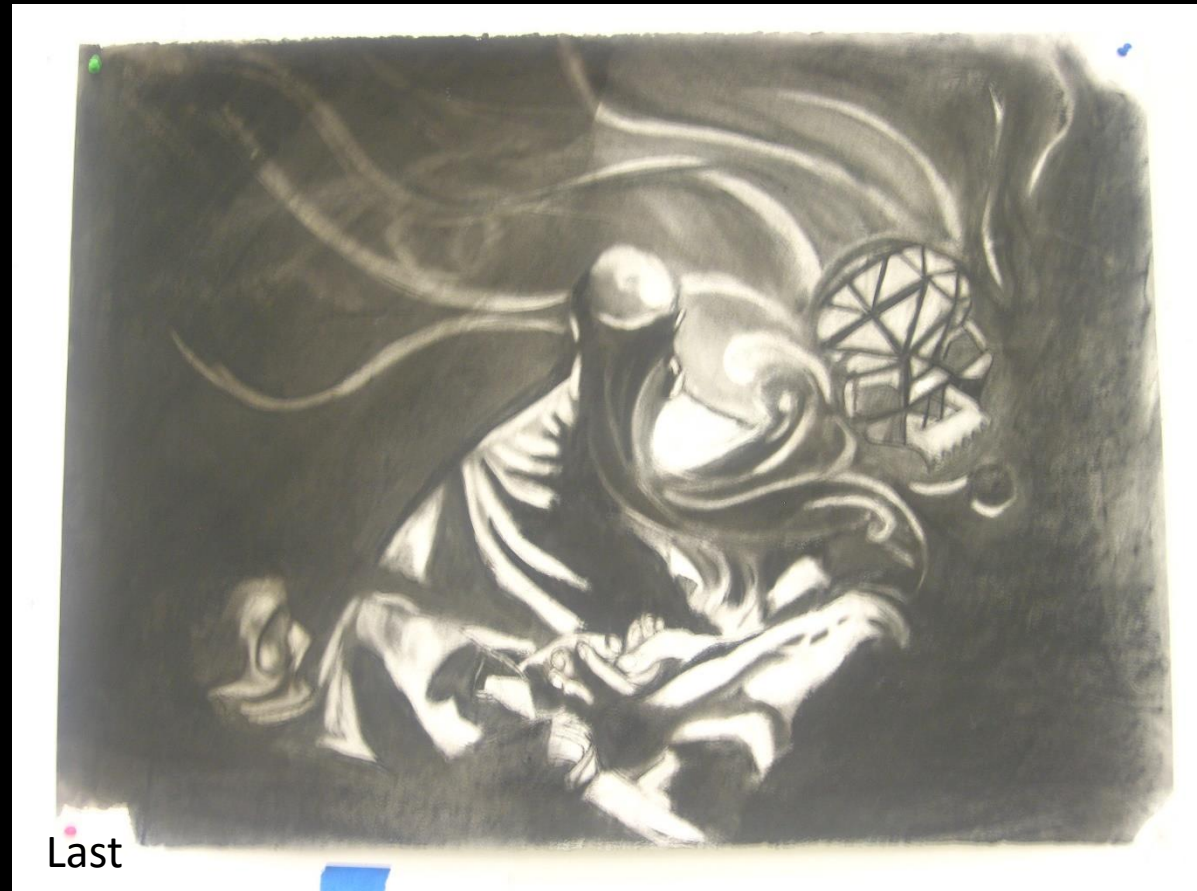
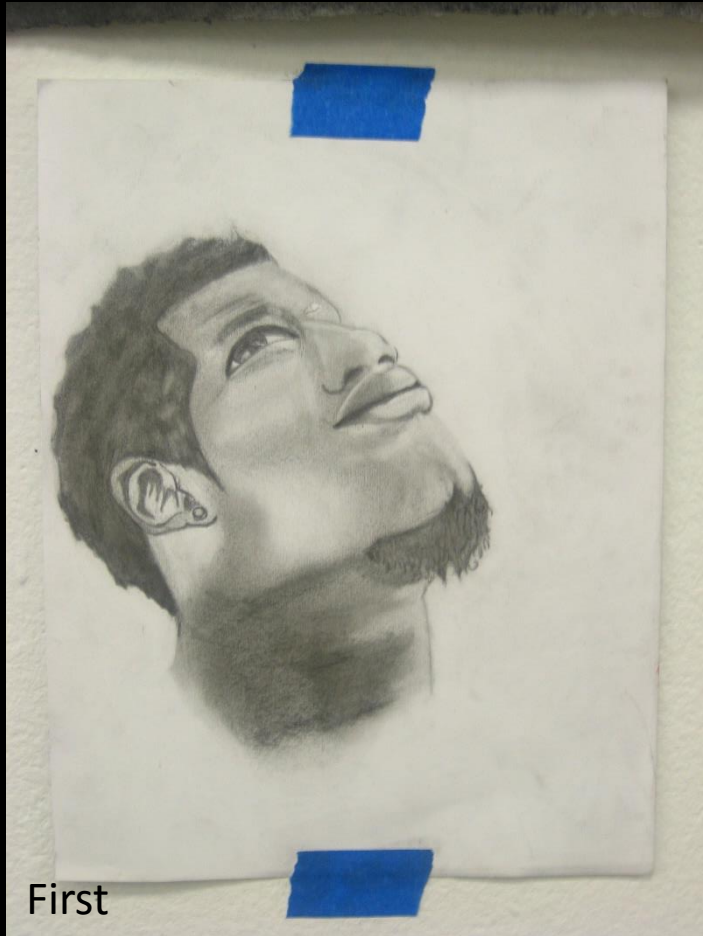
Example Student #17:

First: Assignment – Self Portrait without instruction

Last Assignment – Portrait with Skull and Cube Skull



Student #10:
First: Assignment – Self Portrait without instruction
Last Assignment – Portrait with Skull and Cube Skull



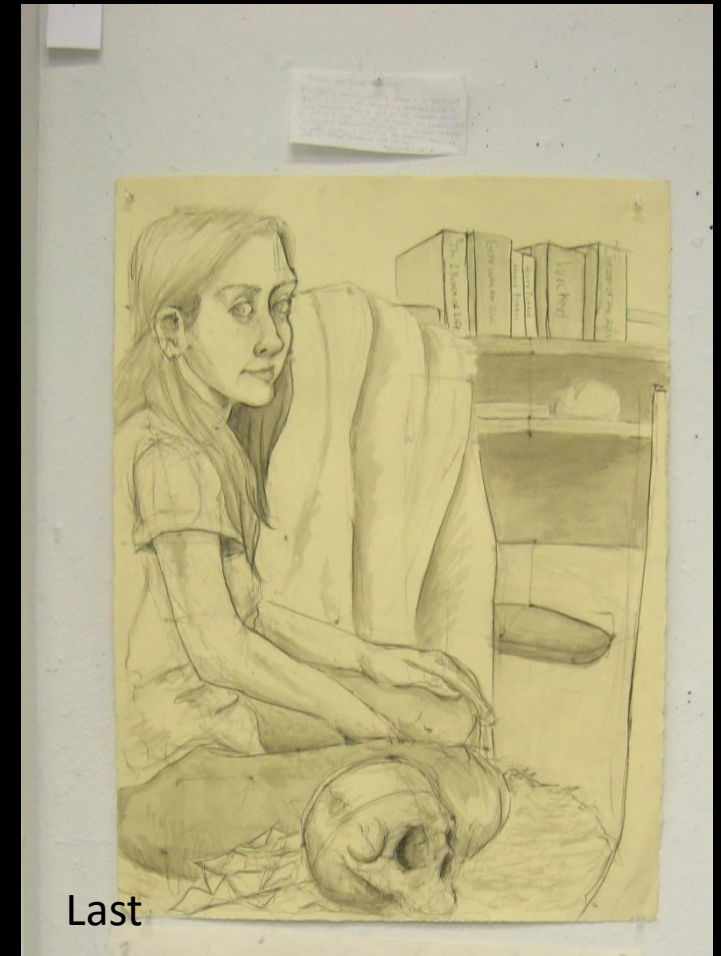
Student #15:
First: Assignment – Self Portrait without instruction
Last Assignment – Portrait with Skull and Cube Skull



First



Mid-Semester



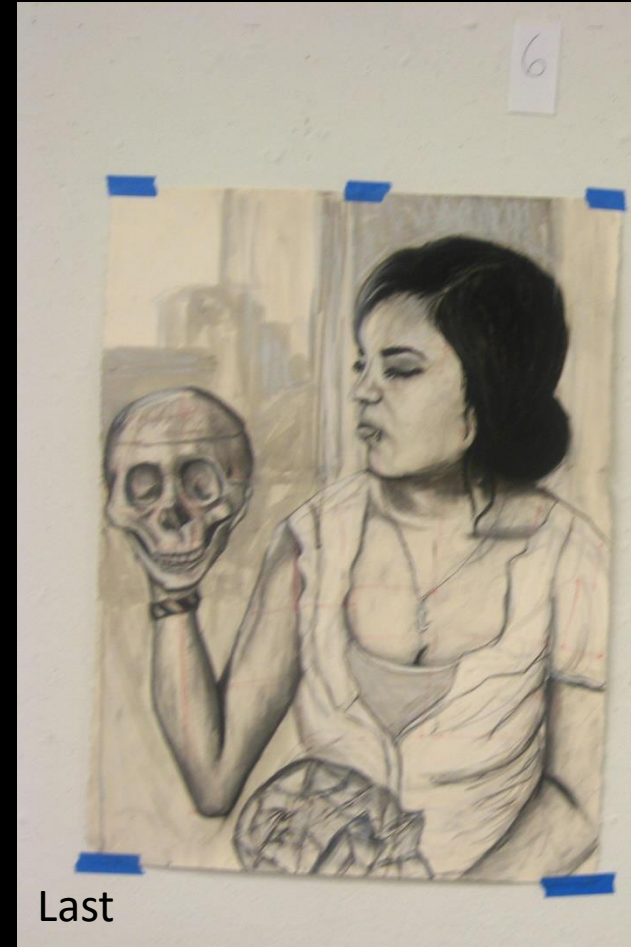
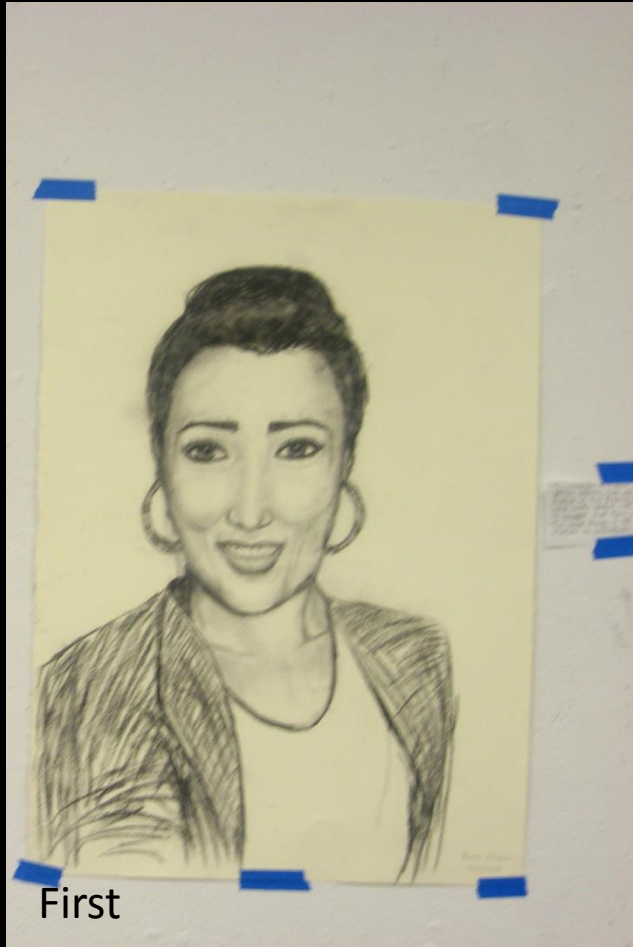
Last

Example Student #11:

First: Assignment – Self Portrait without instruction

Mid Semester – Self Portrait from life using two mirrors

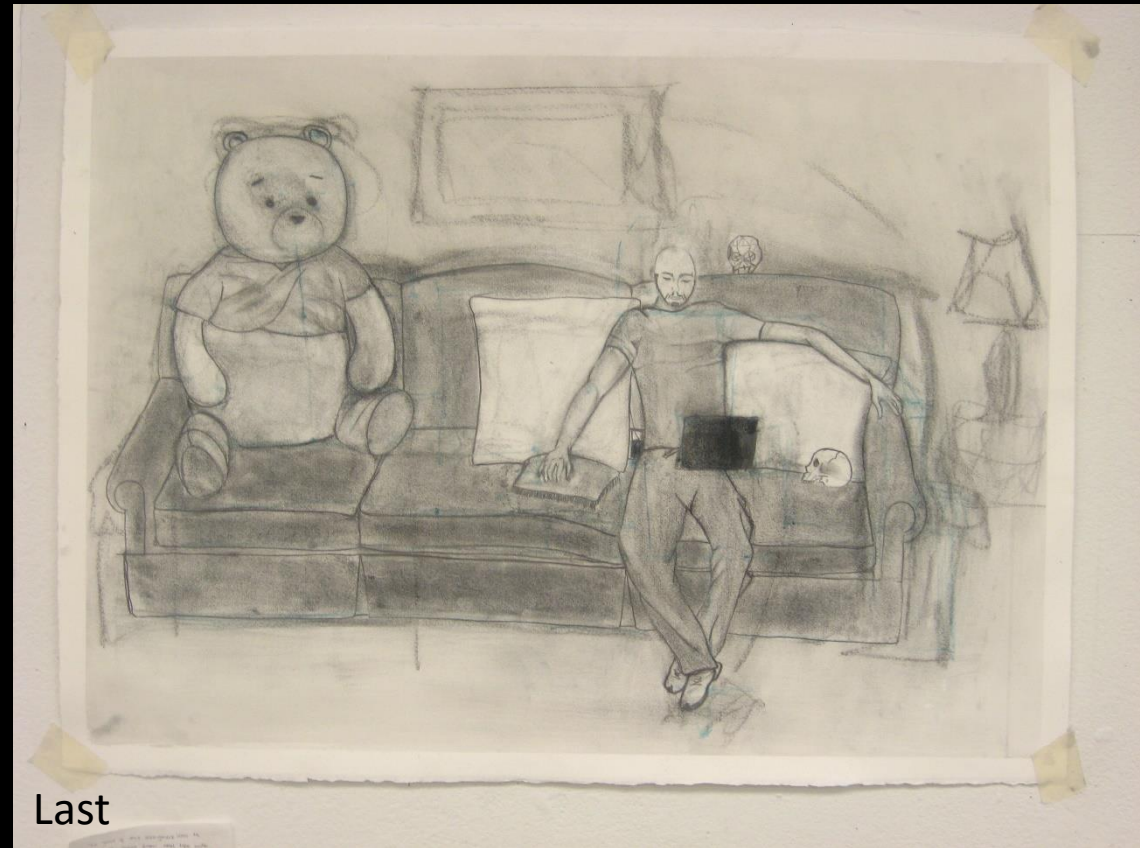
Last Assignment – Portrait with Skull and Cube Skull



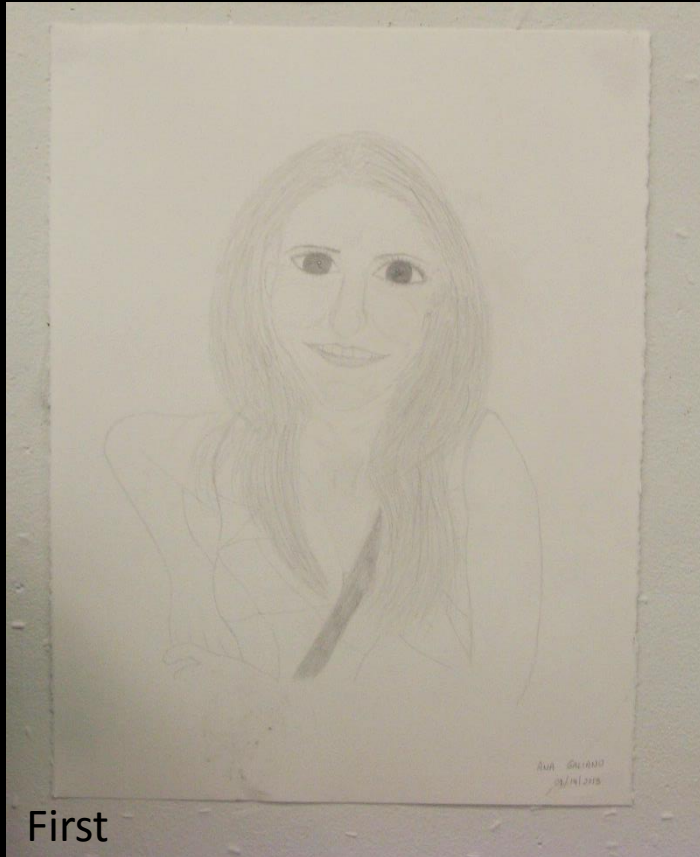
Student #6:

First: Assignment – Self Portrait without instruction

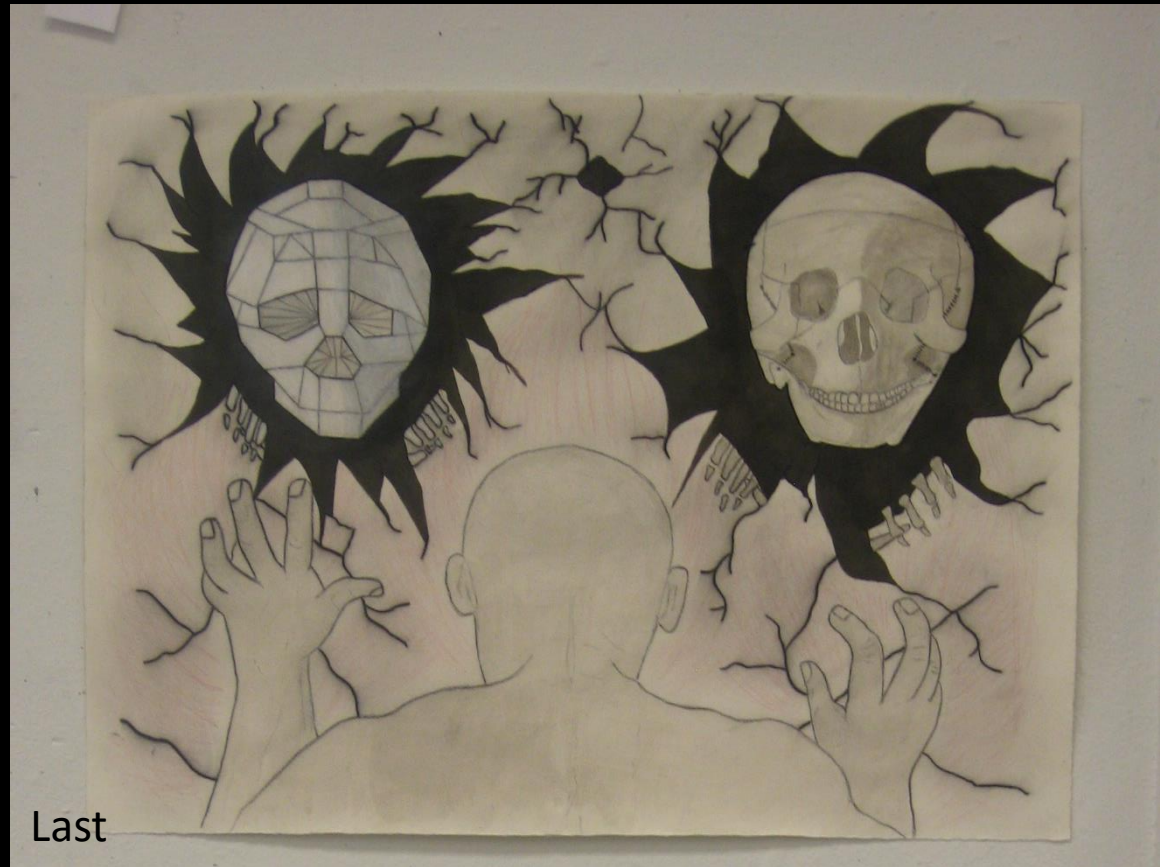
Last Assignment – Portrait with Skull and Cube Skull



Student #12:
First: Assignment – Self Portrait without instruction
Last Assignment – Portrait with Skull and Cube Skull



First



Last

Student #5:

First: Assignment – Self Portrait without instruction

Last Assignment – Portrait with Skull and Cube Skull



First



Last

Student #2:

First: Assignment – Self Portrait without instruction

Last Assignment – Portrait with Skull and Cube Skull